

# Korea 101: Central Administrative Agencies and Local Governments

*Living in Korea*, published by the Investment Consulting Center, provides necessary information and helpful tips for day-to-day life in Korea. Here's what's featured this month.

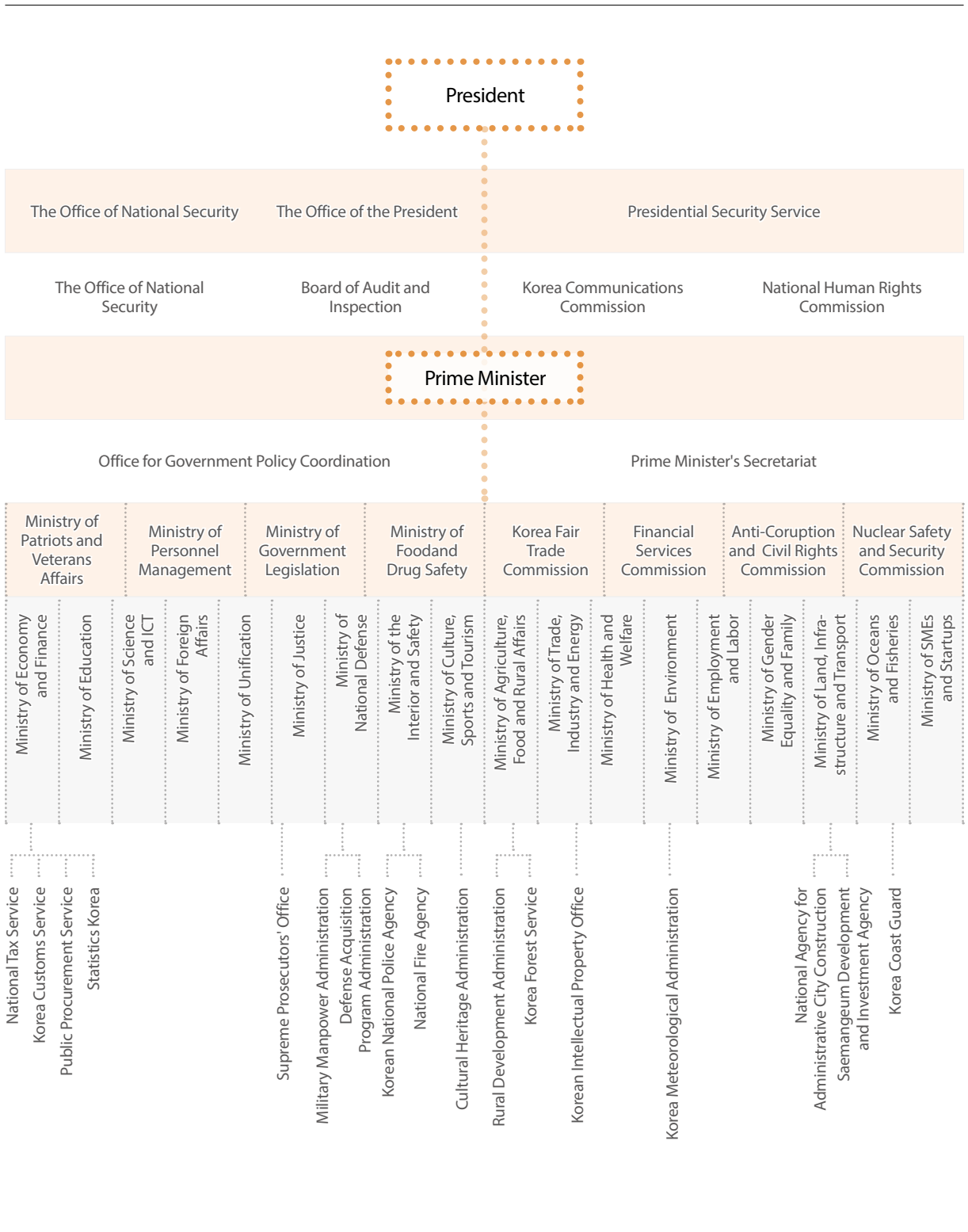
## Central Administrative Agencies

Central administrative agencies are liable to provide public service for the entire nation. The agencies are headed by the president. The prime minister assists the president while supervising ministries. Ministers direct and oversee their ministries while executing matters as prescribed by legislation. Korea's central administrative agencies, or the administration for short, consists of 18 bu, 5 cheo 17 cheong, two won, four sil, and six committees (Total: 52 agencies as of 2019). Out of six committees, the National Human Rights Commission is an independent agency.

## Local Governments

According to the Local Autonomy Act, local governments in Korea are classified into two categories: upper level local autonomy (17 - special metropolitan city, metropolitan city, metropolitan autonomous city, Do and special self-governing province) and lower level local autonomy (226 - Si, Gun, and Gu) (as of 2019).

Each local government has local officials appointed or dismissed by the head of the local government elected by residents' direct elections and executive organs composed of state officials appointed or dismissed by the president or relevant ministers on the recommendation of the head of the local government. The local government also runs a local council elected by residents' direct elections that are responsible for legislation, amendment and repeal of local ordinances; deliberation and determination of budgets; approval for settlement of accounts; audit and inspection of administrative affairs; and acceptance and handling of petitions, etc. Local governments cover local finances through local tax revenues and non-tax income including service charges and user fees; local subsidies from the central government; national subsidies, and local taxes.



*If you have further questions please contact*

**+82-1600-7119**

*or visit*

**[www.investkorea.org](http://www.investkorea.org)**